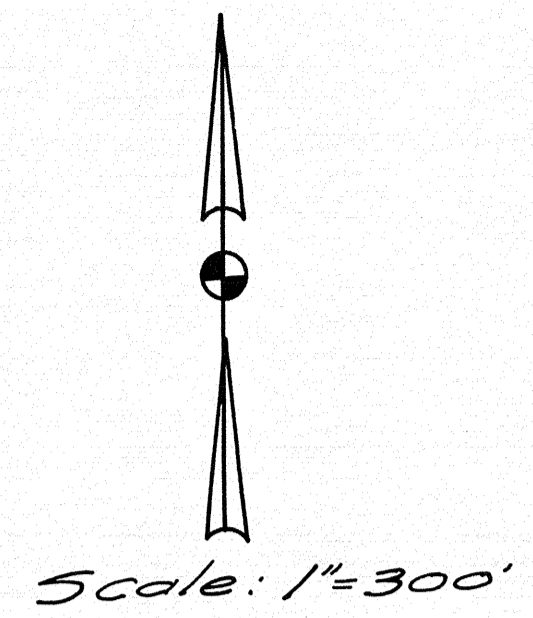
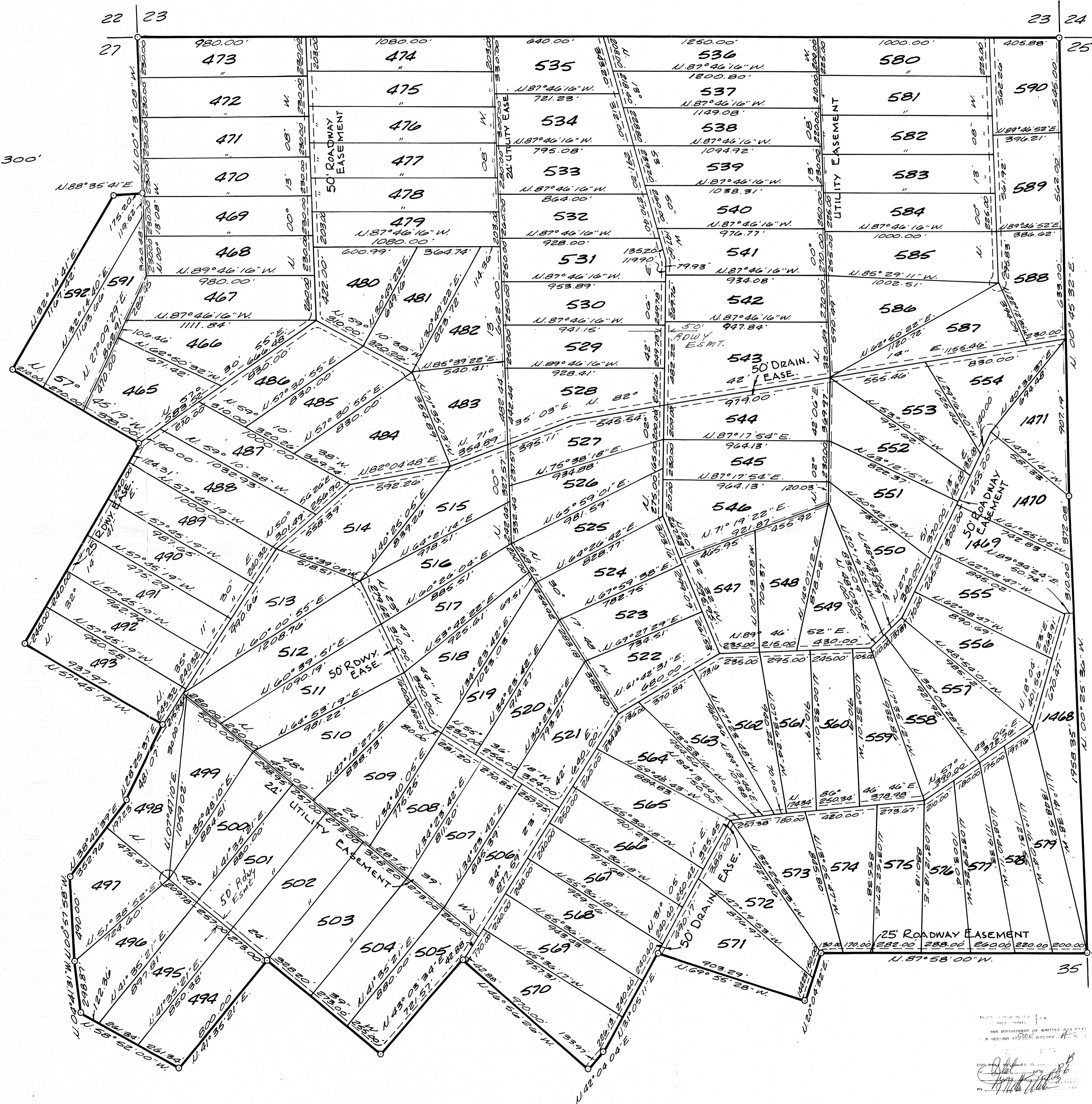


VALLE DE MAÑANA SURVEY PLAT

SURVEY PLAT OF SECTION 26 & PARTS OF SECTIONS 27 AND 35, T.3N., R.4E., NEW MEXICO MERIDIAN N., SOCORRO COUNTY, NEW MEXICO.



Scale: 1"=300'



DEDICATION OF
VALLE DE MAÑANA
SOCORRO COUNTY, NEW MEXICO

The survey plat of the following described land and real estate, to-wit:

That certain tract of land and real estate located in Section 26 and parts of Sections 35 and 34, Township 3 North, Range 4 West, New Mexico Meridian, and more particularly described as follows, to-wit: Beginning at the Southeast corner of said Section 26; thence run North 87°58'00" West, a distance of 1550.00 feet; thence run South 20°04'32" West, a distance of 294.23 feet; thence run North 1°55'28" West, a distance of 903.29 feet; thence run South 31°05'11" West, a distance of 648.03 feet; thence run South 42°04'04" West, a distance of 133.97 feet; thence run North 46°56'26" West, a distance of 69°55'28" West, a distance of 721.57 feet; thence run North 41°03'21" West, a distance of 970.00 feet; thence run South 43°03'34" West, a distance of 661.31 feet; thence run North 04°04'31" West, a distance of 800.00 feet; thence run North 00°57'58" West, a distance of 490.00 feet; thence run North 38°42'39" West, a distance of 550.19 feet; thence run North 28°25'37" East, a distance of 298.87 feet; thence run North 58°52'00" West, a distance of 937.97 feet; thence run North 32°14'41" East, a distance of 1329.31 feet; thence run North 57°45'19" West, a distance of 858.00 feet; thence run North 00°13'08" West, a distance of 1167.42 feet; thence run North 88°35'41" East, a distance of 175.20 feet; thence run North 87°46'16" West, a distance of 5355.88 feet to the Northwest Section corner; thence run South 09°45'32" West, a distance of 2647.19 feet to the Northeast Section corner; thence run South 00°25'36" East, a distance of 2640.43 feet to the TRUE East Quarter corner; thence run South 00°25'36" East, a distance of 720.43 feet to the TRUE POINT OF BEGINNING. - Containing 720.43 acres. County of Socorro, State of New Mexico.

Appearing on this plat and to be shown as Valle de Manana, is with the free consent and in accordance with the desire of the undersigned owners of said land, to-wit: THE FIRST NATIONAL BANK IN ALBUQUERQUE, NEW MEXICO. As trustee and not personally as per instructions from the Beneficiaries under said FIRST NATIONAL BANK IN ALBUQUERQUE, New Mexico, ss. *Attest: Chester A. Paszewski* Assistant Cashier approved: *By Chester A. Paszewski* VICE PRESIDENT AND TRUST OFFICER

The foregoing instrument was acknowledged before me this 8 day of August, 1973, by *CHESTER A. PASZEWSKI* (name of Officer) VICE PRESIDENT of First National Bank of Albuquerque, a national banking association on behalf of said bank. *My Commission Expires April 7, 1976* *Notary Public*

State of New Mexico) ss. County of Socorro) *Clayton Wagoner* being first duly sworn, upon his oath states; that he is the attorney for the owners of Valle de Manana, situated in the County of Socorro, State of New Mexico. *Notary Public*

Subscribed and sworn to before me this 8th day of August, 1973. *David E. Douglas* Notary Public

My Commission Expires *June 29, 1977* SURVEYORS CERTIFICATION

This is to certify that I am a registered professional engineer and land surveyor, that this plat has been prepared from notes of field surveys made by me or under my supervision, and that said surveys and this plat are true and correct to the best of my knowledge and belief.

Raymond L. Sand Registered Professional Engineer And Land Surveyor License No. 755

ENVIRONMENTAL IMPROVEMENT AGENCY APPROVAL Each individual water supply and waste water disposal system shown hereon is to be inspected and approved by the New Mexico Environmental Improvement Agency. This plat has been reviewed and approved by the New Mexico Environmental Improvement Agency. *Notary*

OFFICIAL SOCORRO COUNTY COMMISSIONERS APPROVAL The foregoing dedication of Valle de Manana to the County of Socorro, State of New Mexico, is hereby approved this 2nd day of August, 1973. SOCORRO COUNTY COMMISSIONERS *By: [Signature]* Attest: *[Signature]* Socorro County Clerk

STATEMENT The utility easements shown hereon have been approved by the various concerned utility organizations and carries the signed statement of approval. These easements grant the right of right-of-way for the construction and utility, maintenance of the essential interfering trees and shrubs and to remove or cause to be removed those objects planted or installed in said right-of-way which in the judgment of the utility, cause impairment to the facilities of the utility. UTILITY ACKNOWLEDGEMENT

THE MOUNTAIN STATES TELEPHONE AND TELEGRAPH COMPANY By: *[Signature]* Title: *[Signature]* COUNTY OF SOCORRO, STATE OF NEW MEXICO. Note: All parcels shown on this plat contain 5.00 gross acres or more.